

PDC's MRI In-Bore Viewing Projection System

Say good-bye to cords, goggles, mirrors, glasses, extra cleaning and set-up for each patient.

- Video image is projected into the bore
- Video image moves with the patient
- No added workflow
- Eliminates goggles, glasses & mirrors
- Nothing in the bore/no patient contact
- No extra cleaning

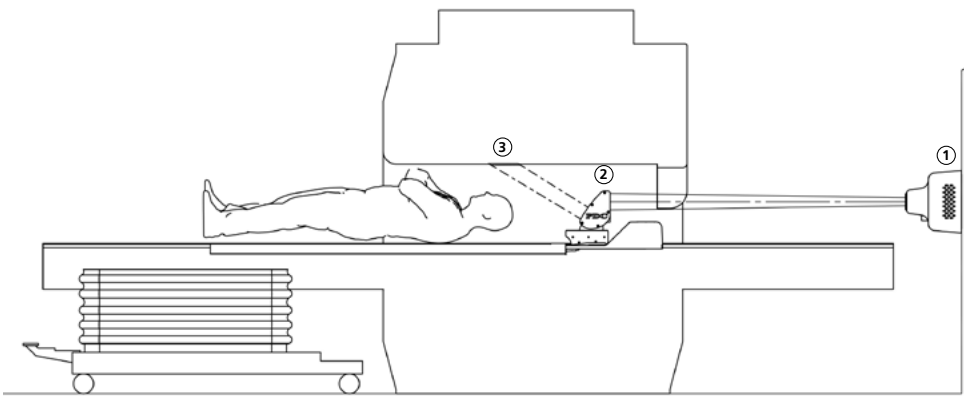


IN-BORE VIEWING PROJECTION SYSTEM



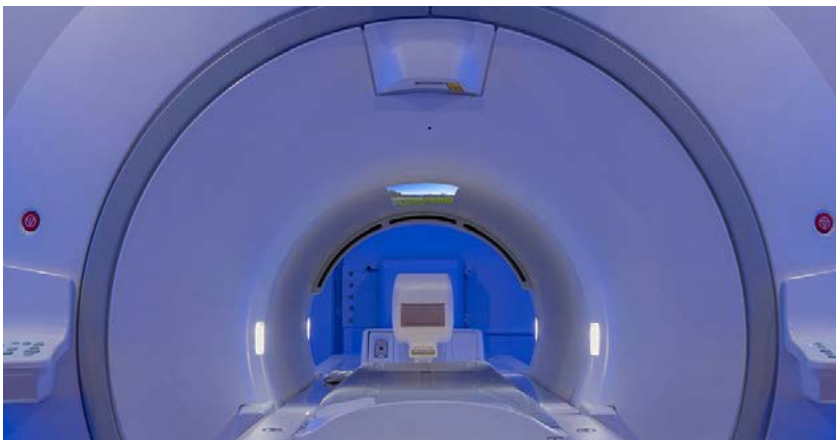
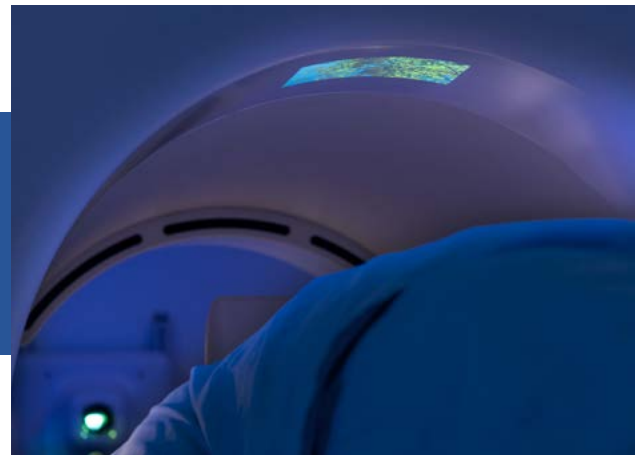
pdcbiz.com • For additional information email pdcbiz@pdcbiz.com

PDC's MRI In-Bore Viewing Projection System is specifically designed to allow head-first patients to experience in-bore viewing from the moment they enter the bore and is proven to reduce patient anxiety, increase patient satisfaction and improve throughput.



- 1 The projector is located on the wall behind the magnet
- 2 Reflecting mirror that moves with table
- 3 Video image remains in focus above patient's face

The video image is projected onto the top of the bore above the patient's face and it moves with the table. There is nothing for the patient to wear and no set-up or cleaning required between patients.



The reflecting mirror is located behind the patient's head on the MRI table.



The projector is located on the wall behind the magnet.

Patent Pending



700 Walnut Ridge Dr., Hartland, WI 53029 • pdcbiz.com

WIRELESS IN-BORE VIEWING VIDEO DISPLAY



Head-First Scan - MRI Wireless Video Display is placed behind the bore. Patient uses mirror glasses, head-coil mirror or bridge mirror to see display

“They aren’t thinking about going in the tube, they are thinking about...the color, video and music. They like all of those different options.”

- Rachel, MRI Tech



Feet-First Scan - MRI Wireless Video Display can be placed next to the patient or behind the bore

MRI-SAFE WIRELESS BATTERY POWERED In-Bore Viewing Video Display

- MRI-safe, no cords or cables
- Easily moves around the scan room
- Operates up to 13 hours on full battery charge
- Recharge MRI WPVD overnight or operate with charger plugged in
- Compatible with all MRI systems
- Audio connects to the MRI patient audio system



**PDC Wireless, Recharging
MRI In-Bore Viewing
Video Display**



pdcbiz.com

• For additional questions email pdcbiz@pdcbiz.com

WIRELESS VIDEO DISPLAY PROVEN BENEFITS:

- Reduces sedation and anesthesia
- Improves MRI through-put
- Increases MRI utilization and revenue
- Improves technologist workflow
- Improves patient satisfaction
- Integrates with fMRI

Customer Case Study on Clinical & Financial Benefits



TWO SOLUTIONS AVAILABLE:

Essential MRI Solution -

- Easy three-step installation
- Connects to customer's audio video source, patient audio system, smartphone, blu-ray or any streaming device
- Installation complete in less than 30 minutes
- No construction required

Patent Pending

Premium MRI Solution -

- Includes PDC's control system
- Touch-pad control
- Streaming capability
- Original PDC Nature Theme videos
- Custom scrolling text on MRI Wireless Video Display
- Countdown timer on MRI Wireless Video Display
- Installation requires mounting control system in the equipment room
- Optional scan room speakers

THE ESSENTIAL INSTALLATION IS COMPLETE IN THREE EASY STEPS - NO CONSTRUCTION REQUIRED



700 Walnut Ridge Dr., Hartland, WI 53029 • pdcbiz.com

All Siemens and Siemens Healthineers product and company names are trademarks™ or registered® trademarks of their respective holders. Use of them does not imply any affiliation with or endorsement by Siemens or Siemens Healthineers.

2/2024



MRI IN-BORE VIEWING VIDEO DISPLAY

YOUR BEST IN-BORE EXPERIENCE – NOW EVEN BETTER!

- Nature Theme Videos or DVD viewing
- Payback in less than 12 months
- Proven to reduce sedation/anesthesia
- Improves patient comfort
- Creates a calming environment
- Tested to meet all MRI requirements
- Improves workflow
- Increases patient satisfaction

NEW!

- Custom Scrolling Text
- Countdown Timers
- Picture-in-Picture (PiP)
- New App and Nature Video Themes

 **Case Study - Improved MRI Patient Experience & Productivity**

The PDC **MRI In-Bore Viewing Video Display** is specifically designed to offer MRI patients in-bore viewing of their favorite Nature Theme video or DVD, goggle-free, regardless of patient orientation. For head-first patients, Mirror Glasses or a Head Coil Mirror is utilized. For feet-first imaging, GE Healthcare's Comfort Tilt Technology or a pillow may be all you need! The rugged rolling base features an articulating arm for optimum patient viewing positioning. The new **MRI Video Display** features include **Custom Scrolling Text** and **Countdown Timers** to keep patients informed and **Picture-in-Picture (PiP)** to offer patients and caregivers the option to see each other at any time during the scan, enhancing patient comfort and safety. The MRI Video Display seamlessly integrates with PDC's Caring MR Suite®.

"We love [our MRI Video Display] and are having tons of positive feedback from patients. We've had at least 4 patients with histories of incomplete exams due to anxiety come in and finish exams easily."

– Nichol A. Hughes,
Longstreet Clinic Radiology



All Siemens and Siemens Healthineers product and company names are trademarks™ or registered® trademarks of their respective holders. Use of them does not imply any affiliation with or endorsement by Siemens or Siemens Healthineers.



700 Walnut Ridge Dr., Hartland, WI 53029 • pdcbiz.com

02/2023