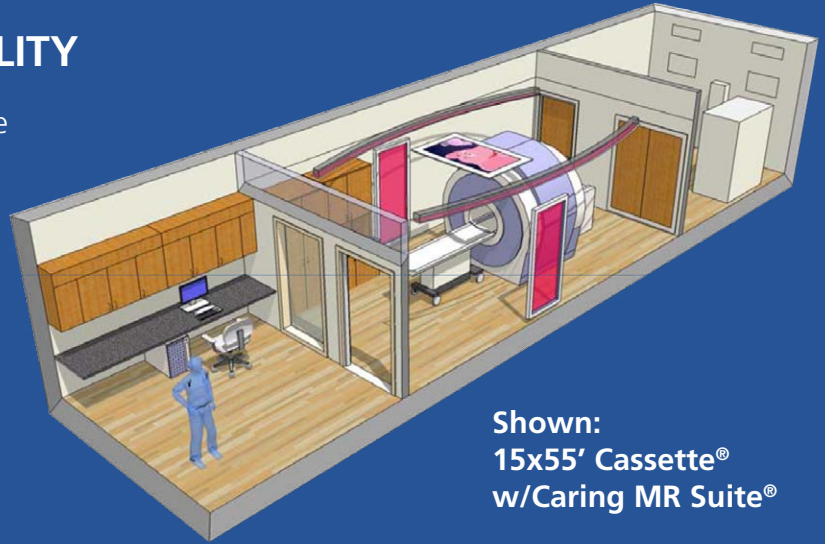




## SPEED - SIMPLICITY - FLEXIBILITY

- Enhanced Institutional Type II-A Structure
- State & FGI Design Compliant
- State Health Dept. Compliant
- UL Listed Components & Designs
- Hurricane Rated Structure Available
- Seismic Rated Zone D or E



Shown:  
15x55' Cassette®  
w/Caring MR Suite®

# PDC Relocatable Cassette® Imaging Suite

MOBILE & FIXED CONSTRUCTION ALTERNATIVE FOR RADIOLOGY

Purchase your new CT, MR, or PET/CT system in a fully finished, relocatable, institutional code compliant, hospital grade, PDC Cassette®. This super structure building will arrive approximately 15 weeks after plan approval. For MR Systems, the Cassette® will be designed to accommodate all the mechanical and electrical needs of your selected MR System and in certain situations, PDC may pre-install some of the MR cabinets or components prior to shipment. PDC will work with the OEM Project Team on the delivery schedule of the MR system and assist in opening and closing the structure to allow the MR unit to be rigged into place. The Cassette® comes complete with RF and magnetic shielding for MR and lead shielding for Molecular Imaging and CT modalities (MICT). The Cassette® can be attached to your Hospital/OIC or operate as a stand-alone building.

- Vult = 190 MPH super-structure
- Fully finished interior & exterior
- Self-contained HVAC system
- Wet fire suppression (dry optional)
- Vibration isolation design for optimum image quality
- Communication & data conduits
- Transportation from PDC to customer

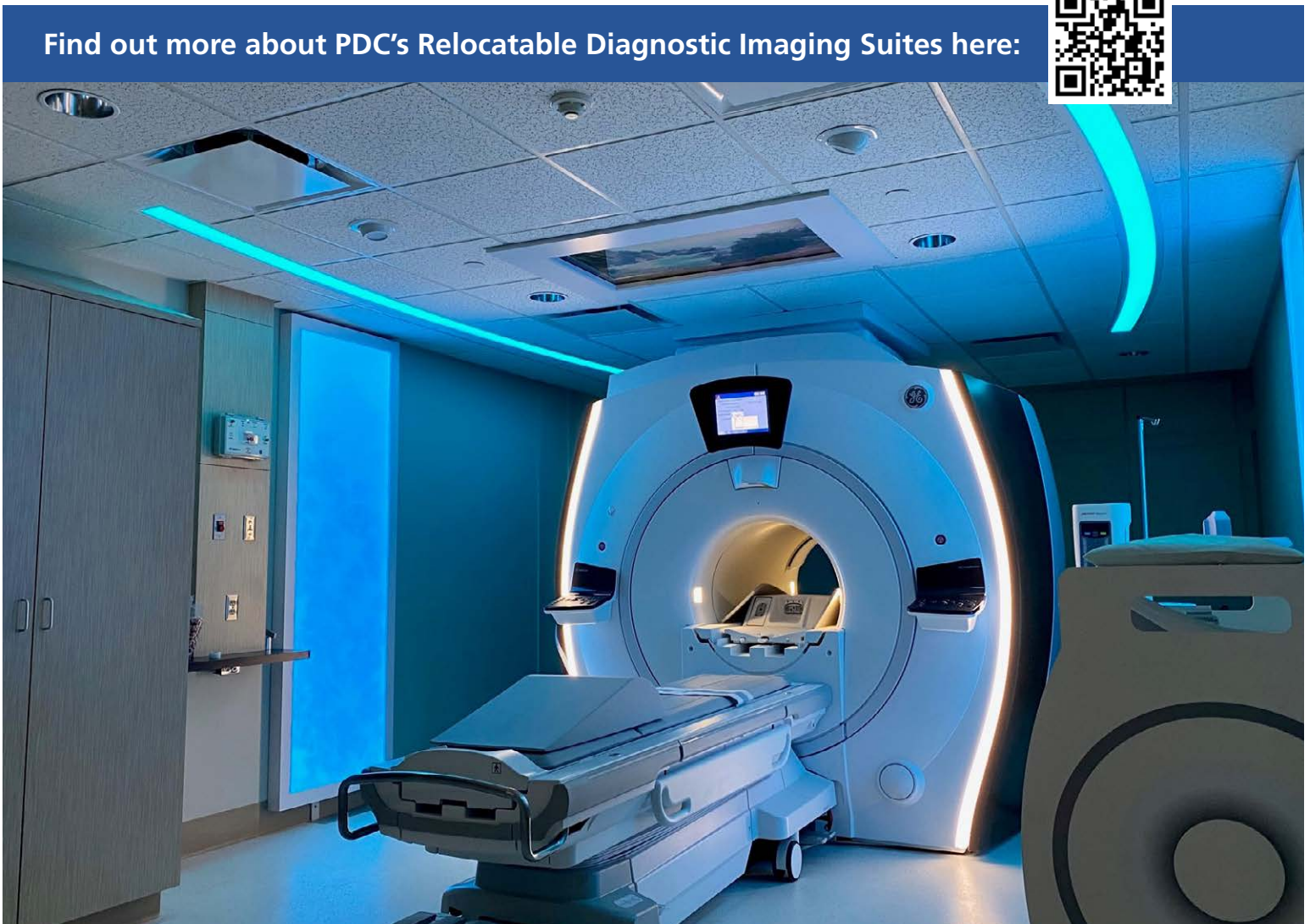


## **ADDITIONAL FEATURES & OPTIONS**

- Expandable to 60' in length\*
- ADA restroom/changing room
- Med gas (O2, Air, Suction)
- Wall hung or rooftop AC- units
- Negative pressure Clinical Suite
- UV lighting for sterilization
- Hand wash sink
- Solid surface & custom cabinetry
- Auto & sound attenuation door options
- Full glass door & control windows w/ privacy option
- FerrAlert HALO II Plus
- LED and RGB lighting solutions
- Caring Suite® for patient experience
- In-Bore Viewing Video Display System

\* If you need additional clinical space beyond a 15x60' Cassette®, please consider our Mini Clinic Solution (more than one Cassette®), where the design and size possibilities are endless.

Find out more about PDC's Relocatable Diagnostic Imaging Suites here:



700 Walnut Ridge Dr., Hartland, WI 53029 • [pdcbiz.com](http://pdcbiz.com)