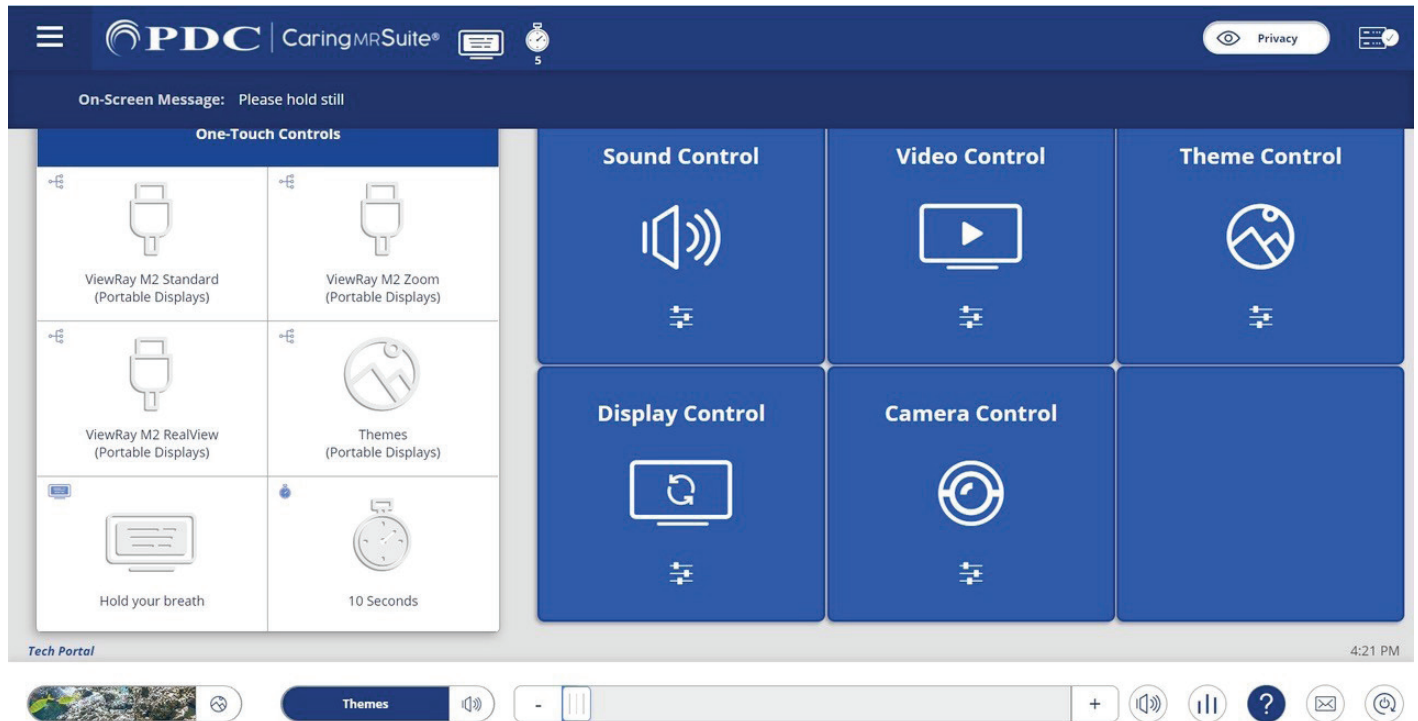


TECHNOLOGIST PORTAL - FOR FULL SUITE CONTROLS

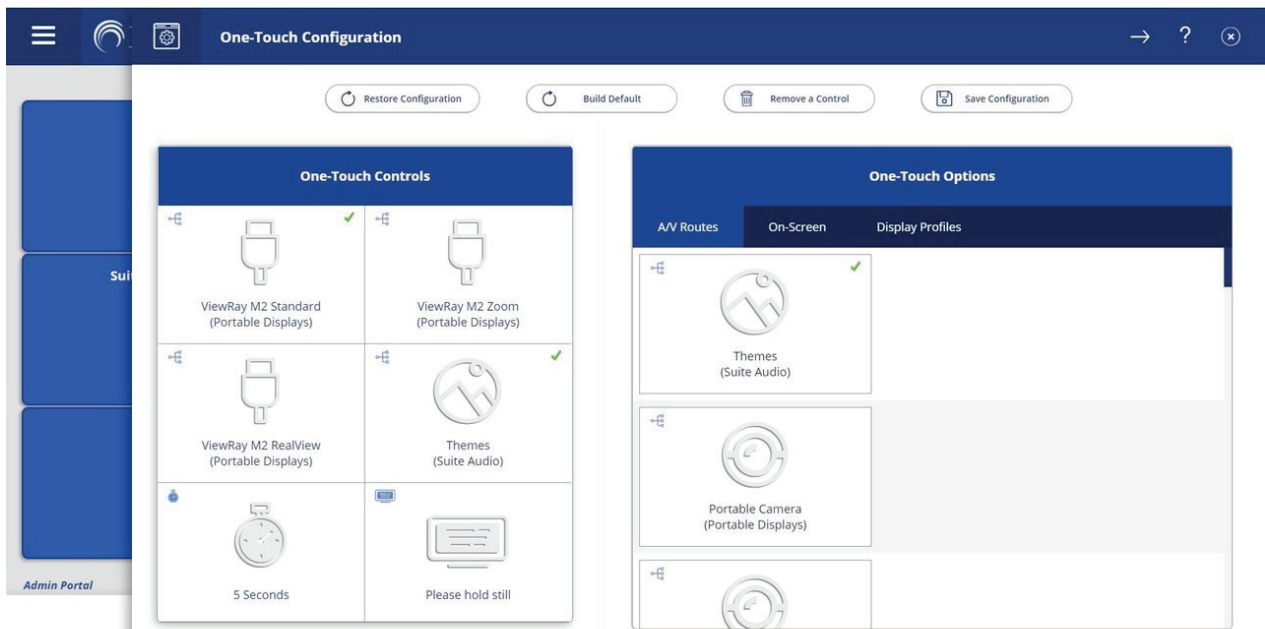


*App features may vary

- **One-Touch Controls:** Tap a **ViewRay Treatment View** option, **Themes**, **message** and or **timer** to show the option on the patient display. To customize One-Touch options, see **Page 2**
- **Sound Control:** Tap for **Audio Options**. Tap **Current Source** on blue bar for **options**. Tap **Desired Source** to change
 - **My Device & DVD:** Use audio jack for My Device; DVD player manually for DVD/CD
- **Video Control:** Tap for **Video Options**. Tap **Current Source** on blue bar for **options**. Tap **Desired Source** to change. For DVD, manually start DVD player ***Note: Patient View** shows what patients see, **w/Sound** changes audio to match video, **Portable Camera** is the optional patient display camera
- **Theme Control:** Tap to select from **All** or **Preferred** Themes. Tap **Theme** to activate
- **Display Control:** Tap for Timers, Messages & Rotation options. Tap option to activate
- **Quick Options At Bottom:** Find & tap for quick Theme, Audio & Power controls
- **Camera Control:** Tap for patient display camera Zoom option, if applicable
- **Menu Icon:** Located at top left of **Caring MR Suite** & offers **Patient Portal** with Preferred Themes & Volume levels to offer Patients
- **Power + Troubleshooting:** Tap **Power icon** at bottom right. Tap desired power option. For video issues, tap **Restart Server**. For **connection issues**, tap **Reboot Tablet**. For **App issues**, tap **Reload App**

For **Training** needs, please contact **Jessica** at jessica@pdcbiz.com

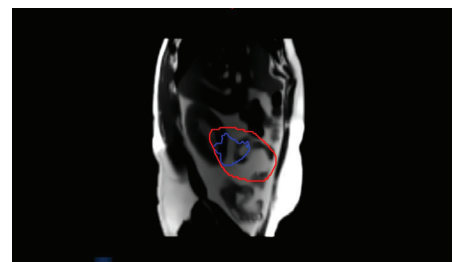
CUSTOMIZATION + TREATMENT VIEW OPTIONS



*App features may vary

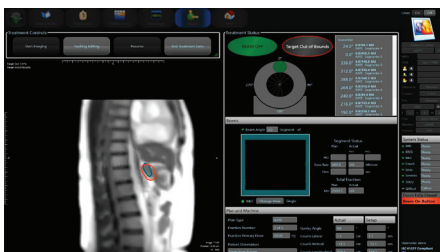
TO CUSTOMIZE ONE-TOUCH CONTROLS:

- Tap **MENU** icon in upper left & tap **Administrator Portal**.
- Tap **APP CONFIGURATION**. Below **Tech Portal**, tap **Configure** beside **One-Touch Configuration**
- Tap **REMOVE A CONTROL** at top, & tap to remove an unwanted option from the left below **One-Touch Controls**. Repeat for all unwanted options
- Find **DESIRED OPTION(S)** at right. Available options are noted with a **“+”** symbol beside the desired option. Tap to add
- To **SAVE CHANGES** tap **Save Configuration** at top, tap **MENU** icon at left & tap **Tech Portal** to return to main view
- To **RESTORE DEFAULT** tap **Build Default** at top

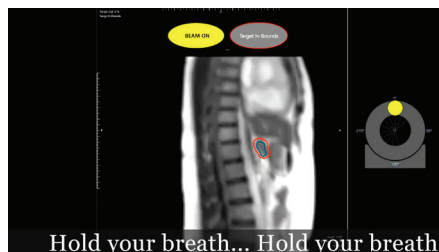


RealView

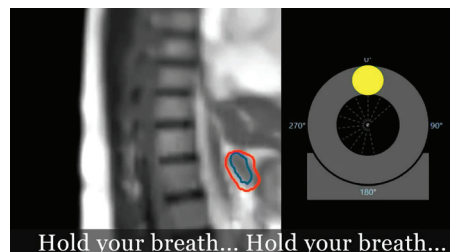
TREATMENT VIEW OPTIONS



ViewRay M2 View



Standard View



Zoom View