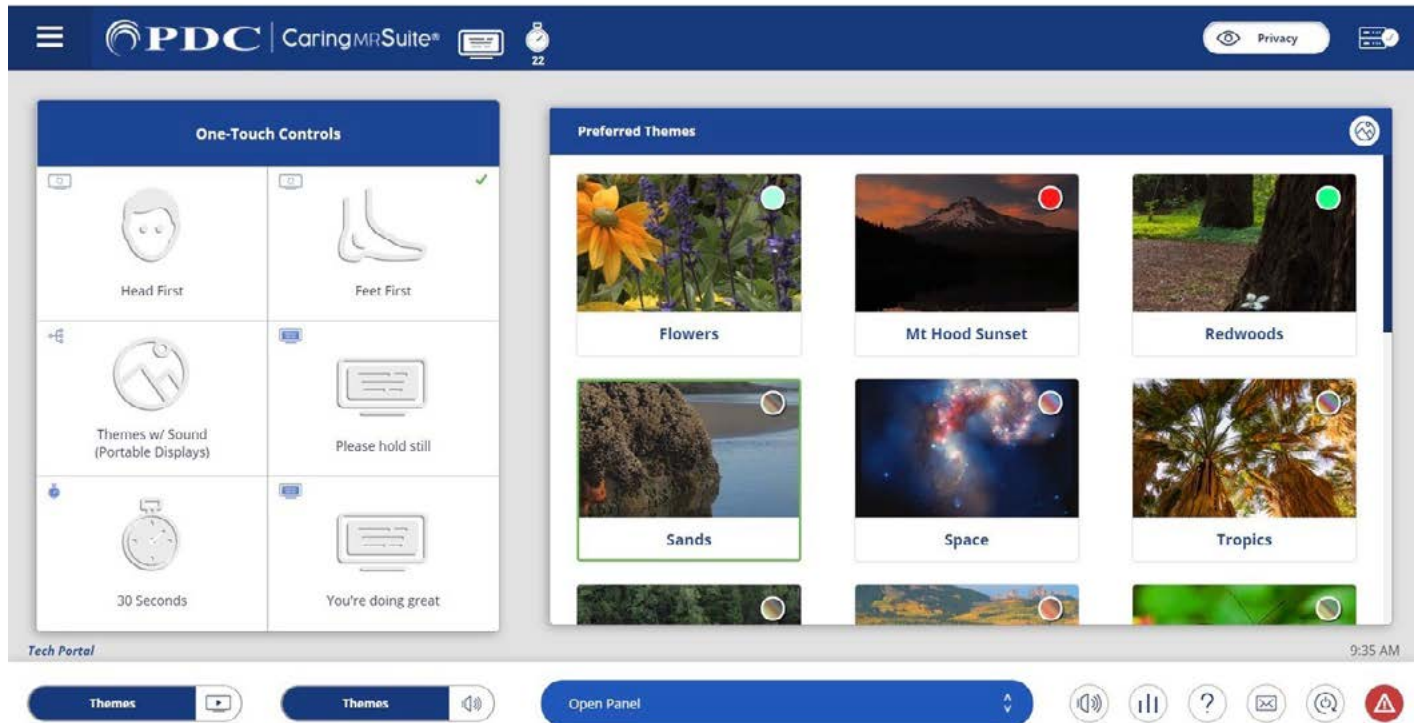


## CARING VIDEO APP: TECHNOLOGIST PORTAL - FOR FULL SUITE CONTROLS

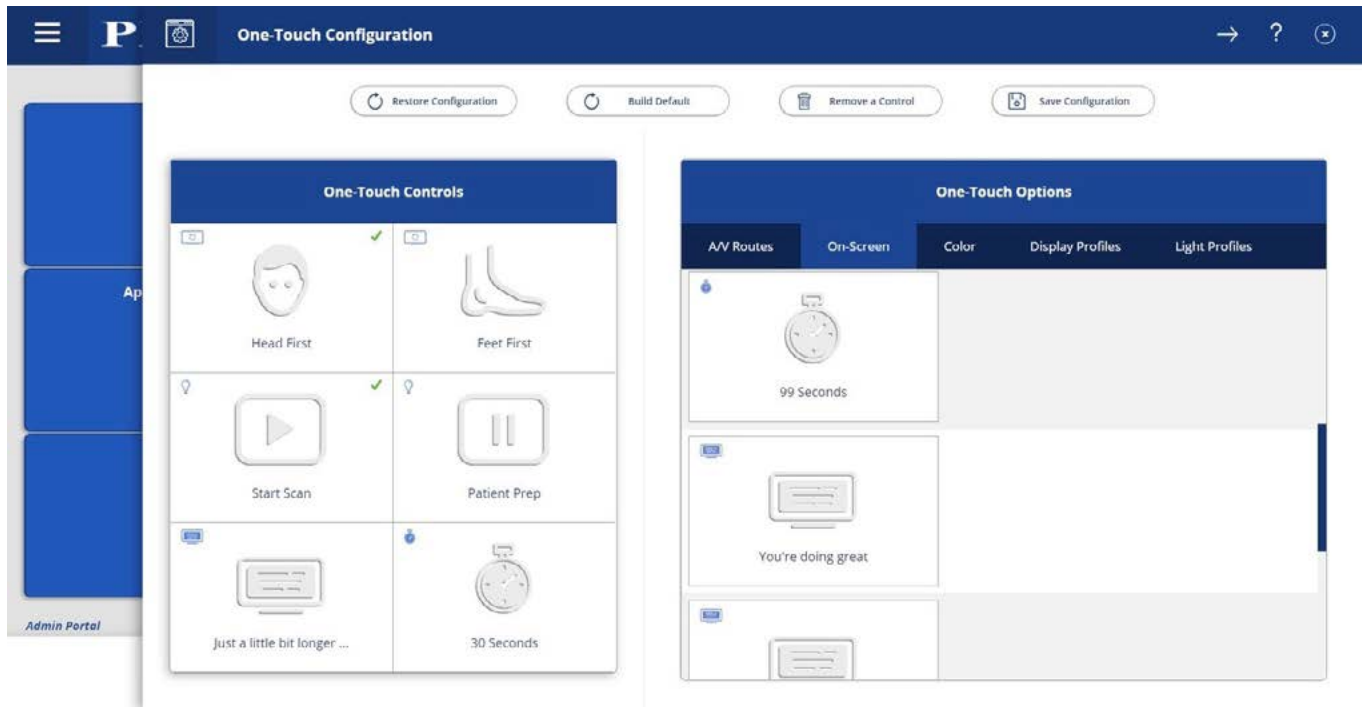


\*App features may vary

- **One-Touch Controls:** Tap for video rotation, video & audio controls, patient messages & timers. To customize, see **P2**
- **Video Control:** Tap **Open Panel** & tap **Video Control**. Tap blue bar below display for options, & tap to select. **Patient View** shows what patients see, **w/Sound** changes audio to match video, & **Portable Camera** is the optional patient display camera
- **Sound Control:** Tap **Audio** icon at bottom left of App & tap to select a source  
 - **My Device & DVD:** Use audio jack with Apple adapter for My Device; DVD player for DVD/CD
- **Theme Control:** Ensure **Themes** is selected in **Video Control** & tap a **Theme image** to activate
- **Display Control:** Tap **Open Panel** & tap **Display Control**. Tap **messages & timers** for patient display(s)
- **Camera Control:** Tap for camera view options, if applicable
- **Volume:** Tap **3-bar icon** at bottom right for slider. Tap **Audio** icon at bottom right to mute & unmute
- **Menu Icon:** At top left of Caring MR Suite & offers Patient Portal option
- **Mail Icon:** Located at bottom right. Displays system messages for troubleshooting
- **Power + Troubleshooting:** Tap **Power icon** at bottom right. Tap desired power option. For video issues, tap **Reboot Server**. For connection issues, tap **Reboot Tablet**. Power down recommended nightly

For **Training** needs, please contact **Jessica** at [jessica@pdcbiz.com](mailto:jessica@pdcbiz.com)

## CUSTOMIZING YOUR SUITE



\*App features may vary

### TO CUSTOMIZE ONE-TOUCH CONTROLS:

- **Tap Menu** icon in upper left & tap **Administrator Portal**.
- **Tap App Configuration.** Below Tech Portal, tap **Configure** beside One-Touch Configuration
- **Tap Remove a Control** at top, & tap to remove an unwanted option from the left below One-Touch Controls. Repeat for all unwanted options
- **To Find Desired Option(s)** at right. Available options are noted with a **“+”** symbol beside the desired option. Tap to add
- **To Save Changes:** tap **Save Configuration** at top, tap **MENU** icon at left & tap **Tech Portal** to return to main view
- **To Restore Default:** tap **Build Default** at top
- **To Change Preferred Themes:** Enter Tech Portal. Tap **Mountain** icon to right of Preferred Themes to view All Themes & Preferred Themes. In left side bar, tap **Preferred**, tap **Unlink** at top & tap to remove Themes. To add Themes re-tap **Unlink**, tap **Add** at bottom & tap to add Themes with red link
- **To Change Patient Messages:** In Tech Portal, tap **Open Panel**, tap **Display Controls** & tap **Expanded Controls** at top. Tap **“+”** beside On Screen Messages to add new message



SCAN FOR MRI CARING SUITE  
VIDEO APP TRAINING &  
MARKETING RESOURCES