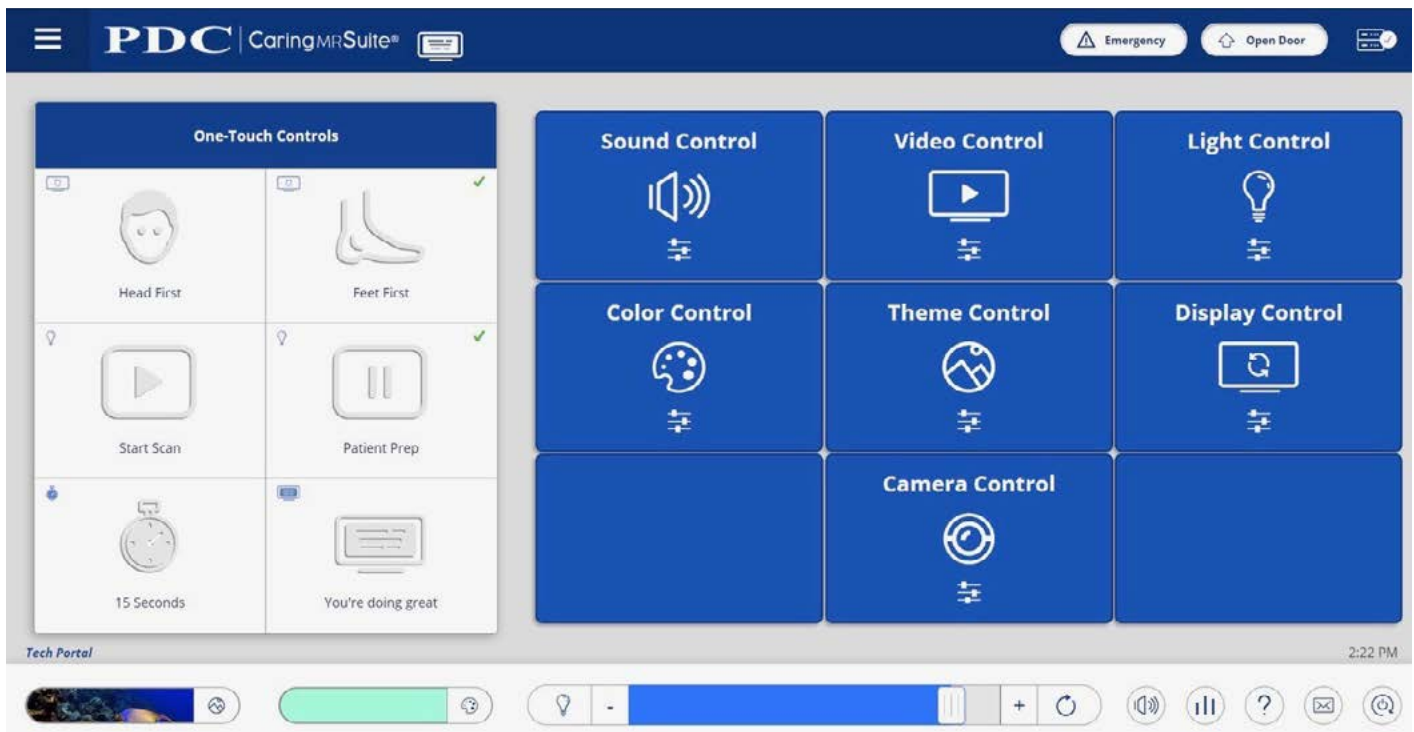


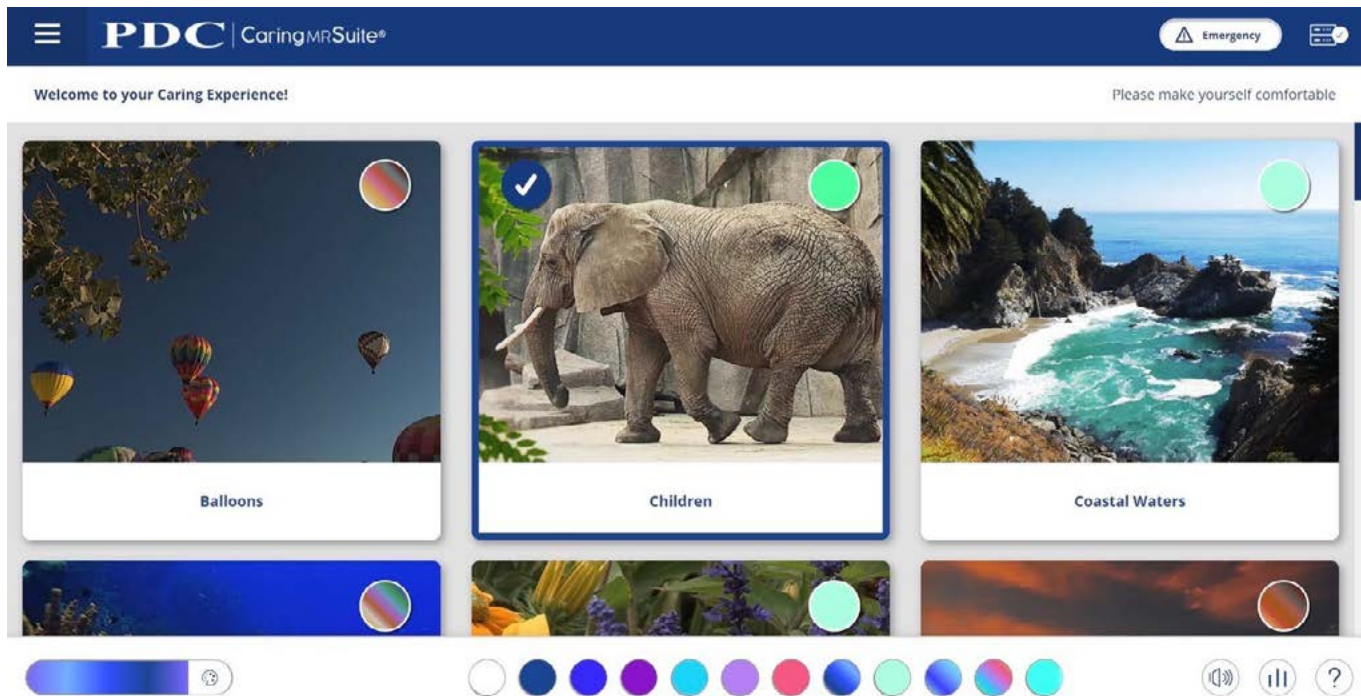
## TECHNOLOGIST PORTAL - FOR FULL SUITE CONTROLS



\*App features may vary

- **One-Touch Controls:** Tap **Head First** or **Feet First** to rotate display per patient orientation. Tap **Start Scan** to dim lights, **Patient Prep** to brighten lights, message & timer to activate
- **Sound Control:** Tap for **Audio Options**. Tap **Current Source** for options. Tap **Desired Source** to change - **My Device & DVD:** Use audio jack for My Device; DVD player manually for DVD/CD
- **Video Control:** Tap for **Video Options**. Tap **Current Source** for options. Tap **Desired Source** to change. Manually start DVD player **\*Note:** DVD player is **not** setup to support streaming
- **Light Control:** Tap for additional white light options
- **Color Control:** Tap to choose from Color Wheel & save presets, if desired
- **Theme Control:** Tap to select from **All** or **Preferred** Themes.
- **Display Control:** Tap for Timers, Messages & Rotation options. Tap to activate
- **Quick Options At Bottom:** Find & tap for quick Theme, Lighting & Volume controls
- **Camera Control:** Tap for camera Zoom & Tilt options, if applicable
- **Menu Icon:** Located at top left of **Caring MR Suite** & offers Patient Portal option (P2) with Preferred Themes, Lighting Presets & Volume levels to offer Patients
- **Power + Troubleshooting:** Tap **Power icon** at bottom right. Tap desired power option. For video issues, tap **Restart Server**. For connection issues, tap **Reboot Tablet**.

## PATIENT PORTAL - FOR LIMITED SUITE CONTROLS



\*App features may vary

- **Patient Portal:** Features **Preferred Themes, Lighting Presets & Master Controls**, designed to offer to patients, if desired, or to offer techs quick, preferred options
- **To Activate:** Simply tap desired Theme image, Lighting color or Master Controls
- **Master Controls:** Located to right of Colors. Offers quick volume & light controls
- **Tech Portal:** Tap Menu at top left & tap to return to Tech Portal for full controls

### To Customize Suite Controls -

- **Change Preferred Themes:** See full guide - Theme Control
- **Change Color Presets:** In Tech Portal, tap **Color Control**. Tap **Color Wheel** to choose color. Tap **Save as Preset**. To delete, tap pencil in Presets & tap to delete. To create & save Gradient Lighting, tap **Expanded Color Options** & tap **Gradient Creator**. Tap "+" to add colors from the Color Wheel or Color Presets. Drag colors to adjust positioning, tap & hold to delete a color & tap pencil icon beside time to adjust gradient length. Clear, Preview & Save options are beside **Gradient Builder** at top.
- **Change Patient Messages:** In Tech Portal, tap **Display Controls** & tap **Expanded Controls** at top. Tap "+" beside On Screen Messages to add new message.

**Thank You!** We hope you love your new Caring Suite!

For **Training** needs, please contact **Jessica** at [jessica@pdcbiz.com](mailto:jessica@pdcbiz.com)



SCAN FOR MRI CARING SUITE  
TRAINING & MARKETING  
RESOURCES