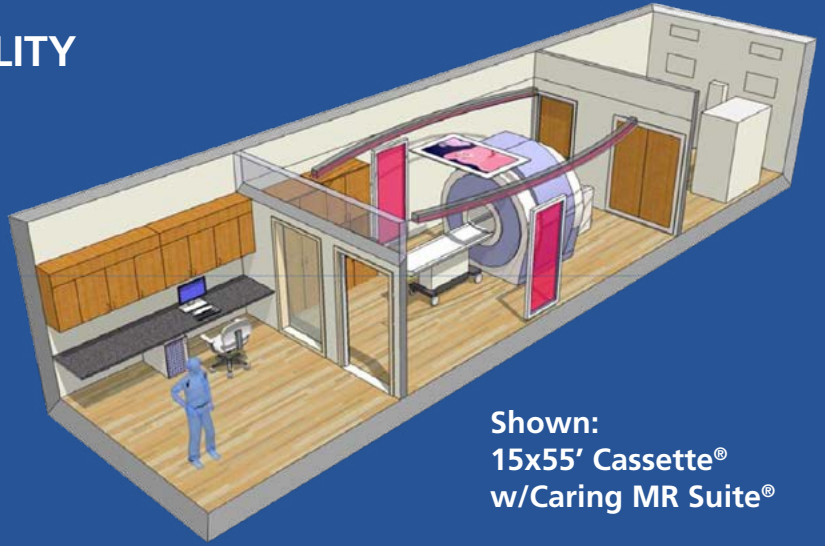




SPEED - SIMPLICITY - FLEXIBILITY

- Enhanced Institutional Type II-B
- State & FGI Design Compliant
- State Health Dept. Compliant
- UL Listed Components & Design
- Hurricane Rated Structure Available
- Seismic Rated Zone D or E



Shown:
15x55' Cassette®
w/Caring MR Suite®

PDC Relocatable Cassette® Imaging Suite

MOBILE & FIXED CONSTRUCTION ALTERNATIVE FOR RADIOLOGY

Purchase or lease your new CT, MR, or PET/CT system in a fully finished, relocatable, institutional code compliant, hospital grade, PDC Cassette®. This super structure building will arrive within 12-15 weeks from purchase order. For MR systems, the building will have a fully installed equipment room and all electrical and mechanical wiring ready to accept your new MR magnet that will be rigged in two days after the building is placed on the foundation. For the MICT modalities, system installation would occur after the building is set. The Cassette® comes complete with RF and magnetic shielding for MR and lead shielding for MICT. The Cassette® can be attached to your Hospital/OIC or operate as a stand-alone building.

- Vult = 190 MPH super-structure
- Fully finished interior & exterior
- Self-contained HVAC system
- Wet fire suppression (dry optional)
- Vibration isolation design for optimum image quality
- Communication & data conduits
- Transportation from PDC to customer

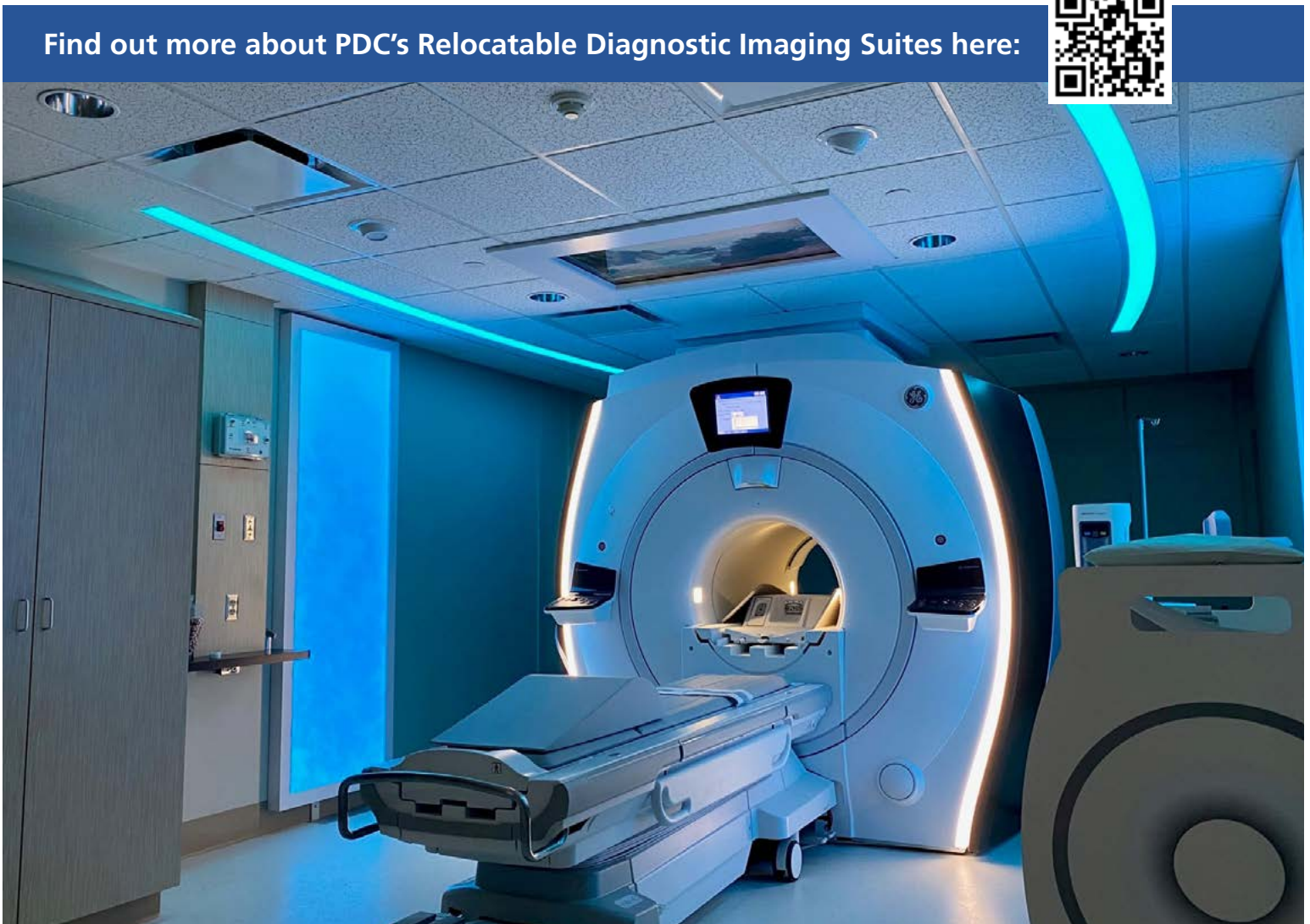


ADDITIONAL FEATURES & OPTIONS

- Expandable to 60' in length*
- Expandable to 16' in width*
- ADA restroom/changing room
- Med gas (O2, Air, Suction)
- Cube HVAC with UV-C
- Negative pressure Clinical Suite
- UV lighting for sterilization
- Hand wash sink
- Solid surface & custom cabinetry
- Auto & sound attenuation door options
- Full glass door & control windows w/ privacy option
- FerrAlert HALO II Plus
- LED and RGB lighting solutions
- Caring Suite® for patient experience
- Portable Video Display (PVD) for in-bore viewing

* If you need additional clinical space beyond a 16x60' Cassette®, please consider our Mini Clinic Solution (more than one Cassette®), where the design and size possibilities are endless.

Find out more about PDC's Relocatable Diagnostic Imaging Suites here:



700 Walnut Ridge Dr., Hartland, WI 53029 • pdcbiz.com