

# LPD - Low Profile Directional Recessed LED Luminaire 3500K for Non-MRI Applications



## Product Description

The LPD- Low Profile Directional Recessed LED Luminaire is a non-ferrous, direct current (DC) adjustable LED Lamp specifically designed to provide increased directional lighting for procedures.

### Performance Summary

Initial Delivered Lumens: 1350 lm

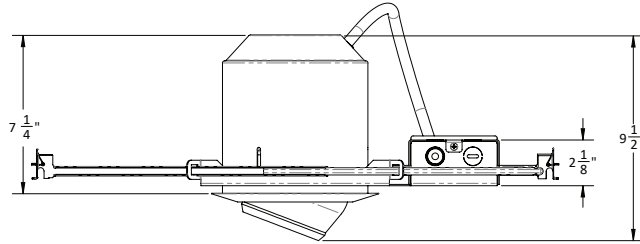
Input Power: 12 watts

CCT: 3500K

Limited Warranty: 3 years

Lifetime: Designed to last 50,000 hours

Dimming: Linear



## Mechanical

	Minimum	Typical	Maximum	Units
Package	-	6" Can	-	-
Electrical Connection	-	Flying Leads / Ethernet Wiring	-	-
Fixture Weight	-	3.0	-	lbs

## Electrical

	Minimum	Typical	Maximum	Units
Input Voltage	-	36	-	VDC
Input Current	-	350	-	mA
Input Power	-	12	-	W
BTU	-	41	-	BTU/hr

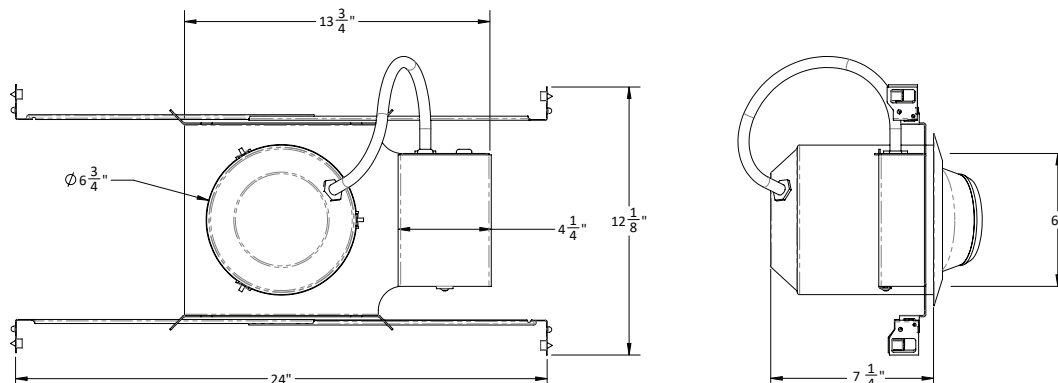
## Compliance

	Minimum	Typical	Maximum	Units
IP	20	25	-	Dry Location
Regulatory	-	Listed	-	UL 2108 CSA 22.2#250.0
RoHS	-	Pending	-	2011/65/EU

## Environmental

	Minimum	Typical	Maximum	Units
Storage Temperature	-40	25	85	C
Operating Temperature	-20	25	35	C
Humidity	5	-	95	%
Lifespan	50000	-	-	Hours
Warranty	3	-	-	Years

## Mechanical Detail



1-07-000105 - Ethernet Wiring

1-07-000106 - DC Wiring



## PDC Specification Submittal

Job Name:

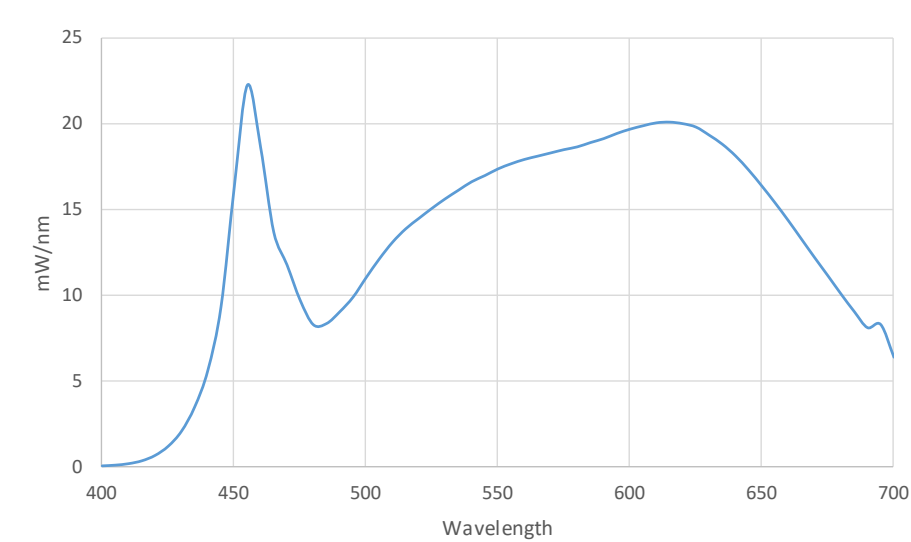
Job Number:

Model Numbers:

Fixture Type:

Photometric				
	Minimum	Typical	Maximum	Units
Luminous Flux	-	1347	-	lm
CCT	-	3500	3883	k
CRI	80	-	-	-
Chromaticity (u')	-	0.226	-	-
Chromaticity (v')	-	0.506	-	-
Efficacy	-	98.32	-	lm/W

Spectral Data Over Visible Wavelength



Polar Plot

