

VERSAVIDEO® 50" Surface Wall Mounted Video Display

MRI Compatible



Product Description

VERSAVIDEO® Video Displays bring the healing quality of nature or a favorite movie to patients with the tap of a finger. The Video Displays are engineered specifically for MRI applications and feature PDC’s original Nature Videography, DVD integration or customer supplied content. Original 4K Nature Theme videography was developed to alleviate MRI anxiety and improve patient satisfaction. Additional compatible music or patient audio system are also an option. All components are non-ferrous. Certified to meet MRI vendor EMI requirements. MRI applications require EMI free emissions for specific frequency bands. All outputs are linear DC and no pulse width modulation (PWM*).

Features and Benefits

- MRI-Safe Video Display, RF Shielded and 4K resolution
- Engineered specifically for MRI environments
- Portrait, landscape and multiple-display configurations available
- Optional Touch Control System
- Optional Theme lighting and Theme audio integration
- Option for patient preview and Theme selection in a waiting area

Electrical

	Minimum	Typical	Maximum	Units
Input Voltage	-	42	-	VDC
Input Power	-	105	-	W
Input Current	-	2.6	-	ADC
Heat	-	358	-	BTU/h
Refresh Rate	-	60	-	Hz

Inputs

	Connection	Function
Power	42 VDC Wires	DC+
	42 VDC Wires	DC-
Fiber ST (2)	Fiber	Video

Compliance

	Minimum	Typical	Maximum	Units
Regulatory Safety	-	Listed	-	UL 62368-1 CSA C22.2 #62368-1 IEC 62368-1 IEC 60065 IEC 60950-1
CE	-	Pending	-	
RoHS	-	Pending	-	2011/65/EU

Environmental

	Minimum	Typical	Maximum	Units
Storage	-40	25	60	°C
Operating Temperature	0	25	40	°C
Humidity	20	-	80	%
Warranty	-	1	-	Years

Installation Notes

A RF Filter and PDC VERSAVIDEO® Controller are required for proper operation in the MRI scan room.
*PWM is known to cause image artifacts, audible noise and light flicker

1-03-000191



PDC Specification Submittal

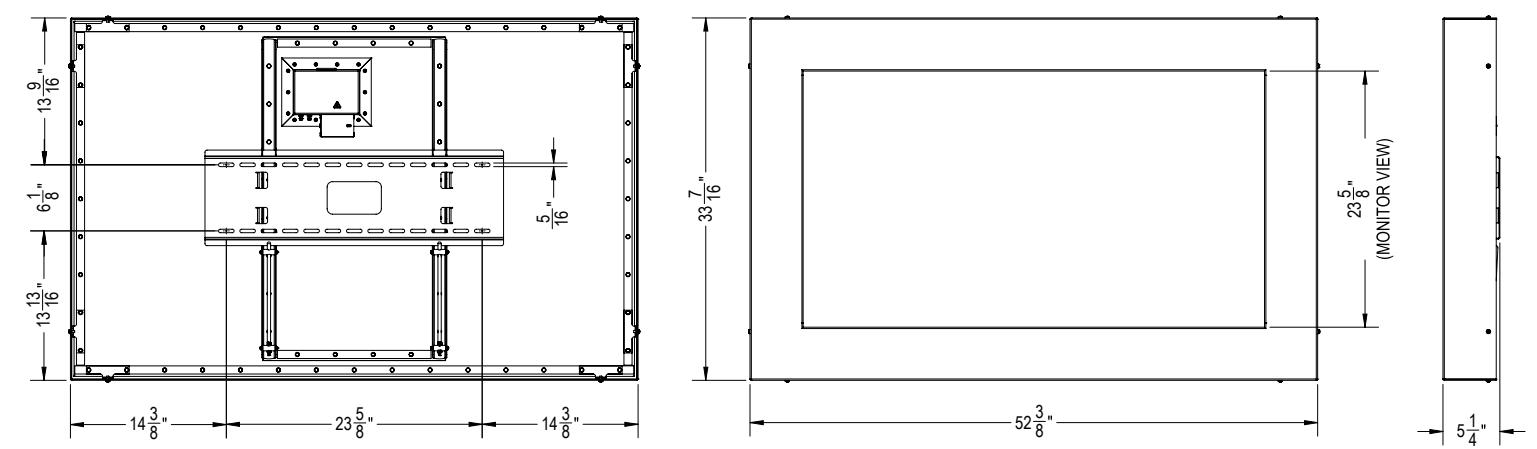
Job Name:	
Job Number:	
Model Numbers:	Fixture Type:



Dimensions				
	Width	Height	Depth	Units
Monitor	52.375	33.43	5.25	inches
Monitor Resolution	3840	2160	-	pixels

Mechanical				
	Minimum	Typical	Maximum	Units
Enclosure	-	5052-H32 AL / Tempered Glass	-	-
Construction	-	Welded	-	-
Product Weight	-	-	200	lbs
Viewing Angle	-	176	-	-

Mechanical Diagram



Mounting

Unlike the Wall Mounted and Ceiling Mounted versions of the MRI Video Display, the VERSAVIDEO® 50" Surface Wall Mounted Video Display is provided with a wall mount bracket. The Wall Mount Bracket allows the Video Display to be mounted directly to a finished wall.

- Easy and versatile installation.
- Can be installed directly to a finished wall using the existing stud frame for support.
- Requires minimal tools and construction making it a quick and easy install in the MRI room.

