

PDC's In-Bore Projection System

A Caring Sensory Experience

Say good-bye to cords, goggles, mirrors, glasses and set-up for each patient.

- Video image is projected into the bore
- Video image moves with the patient
- No added workflow
- Eliminates goggles, glasses & mirrors
- Nothing in the bore/no patient contact
- No cleaning

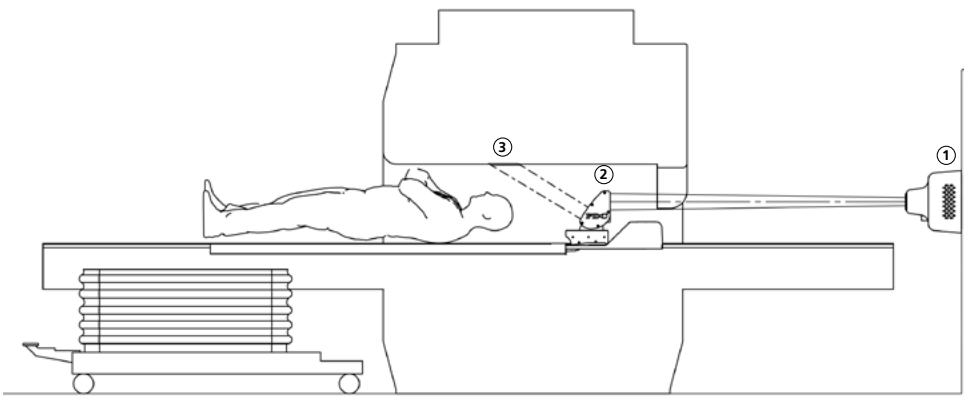


PDC'S IN-BORE PROJECTION SYSTEM



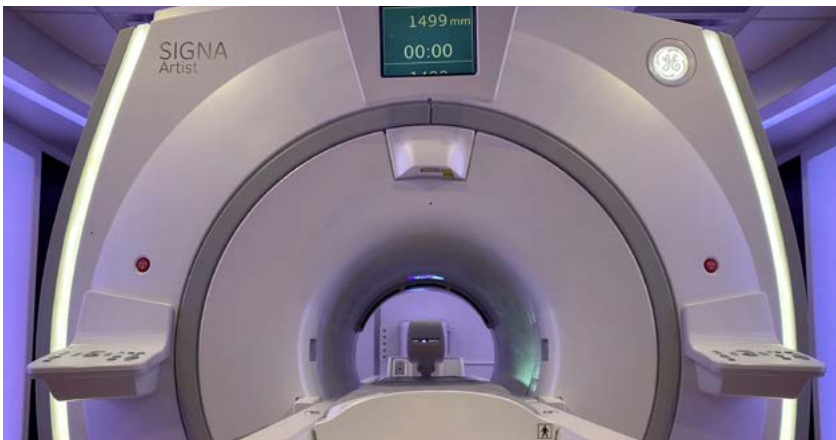
PDC Facilities, Inc. • 262-367-7700 • pdcbiz@pdcbiz.com

PDC's In Bore Projection System is specifically designed to allow head-first patients to experience in-bore viewing from the moment they enter the bore and is proven to reduce patient anxiety, increase patient satisfaction and improve throughput.



- 1 The projector is located on the wall behind the magnet
- 2 Reflecting mirror that moves with table
- 3 Video image remains in focus above patient's face

The video image is projected onto the top of the bore above the patient's face and it moves with the table. There is nothing for the patient to wear and no set-up or cleaning required between patients.



The reflecting mirror is located behind the patient's head on the MRI table.



The projector is located on the wall behind the magnet.